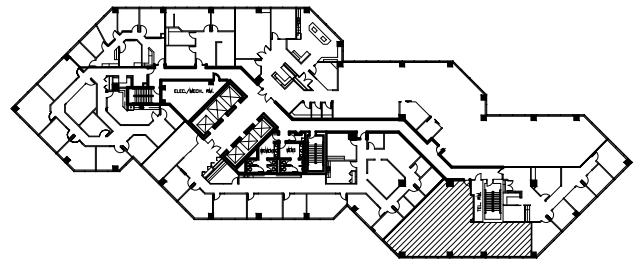


# SQUARE FOOTAGE SUMMARY

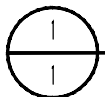
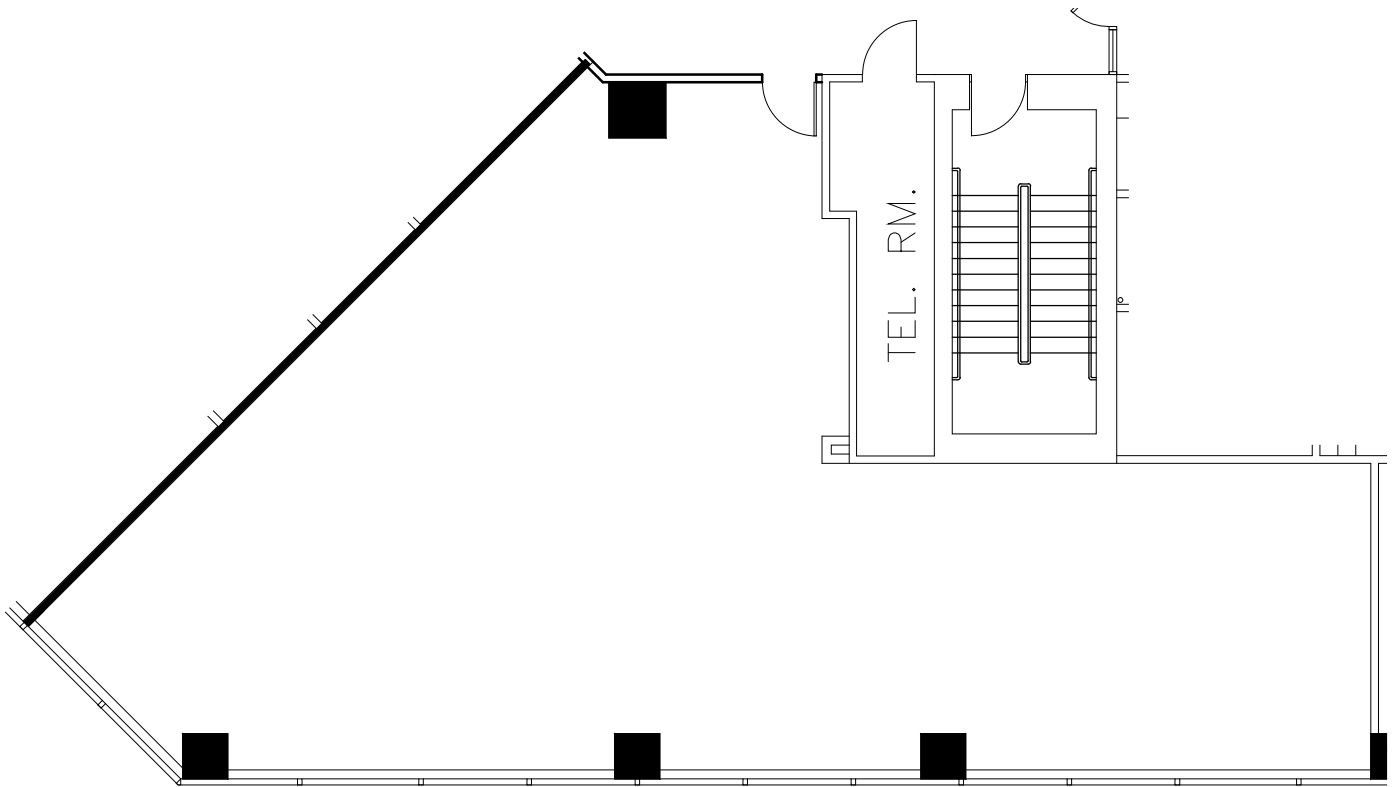
SUITE 840

2,272 R.S.F.



## KEY PLAN

NOT TO SCALE



SUITE 840

114343/ TTL

4-25-14

SCALE: 3/32" = 1'-0"



LEASED & MANAGED BY:



**NORTHLAND PLAZA**  
3800 AMERICAN BLVD WEST  
BLOOMINGTON, MN 55431

**NELSON**

Nelson Upper Midwest Operating Company, LLC  
a licensed affiliate

1201 Marquette Avenue South - Suite 200  
Minneapolis, MN 55403  
Phone: (612) 822-1211  
Fax: (612) 822-1006