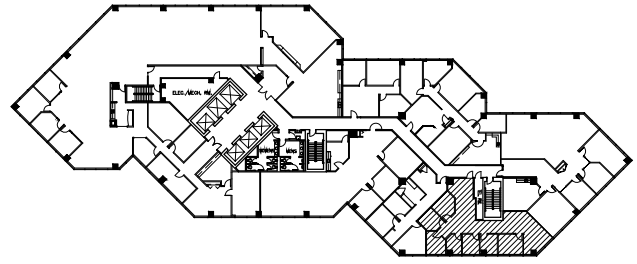


SQUARE FOOTAGE SUMMARY

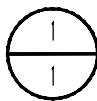
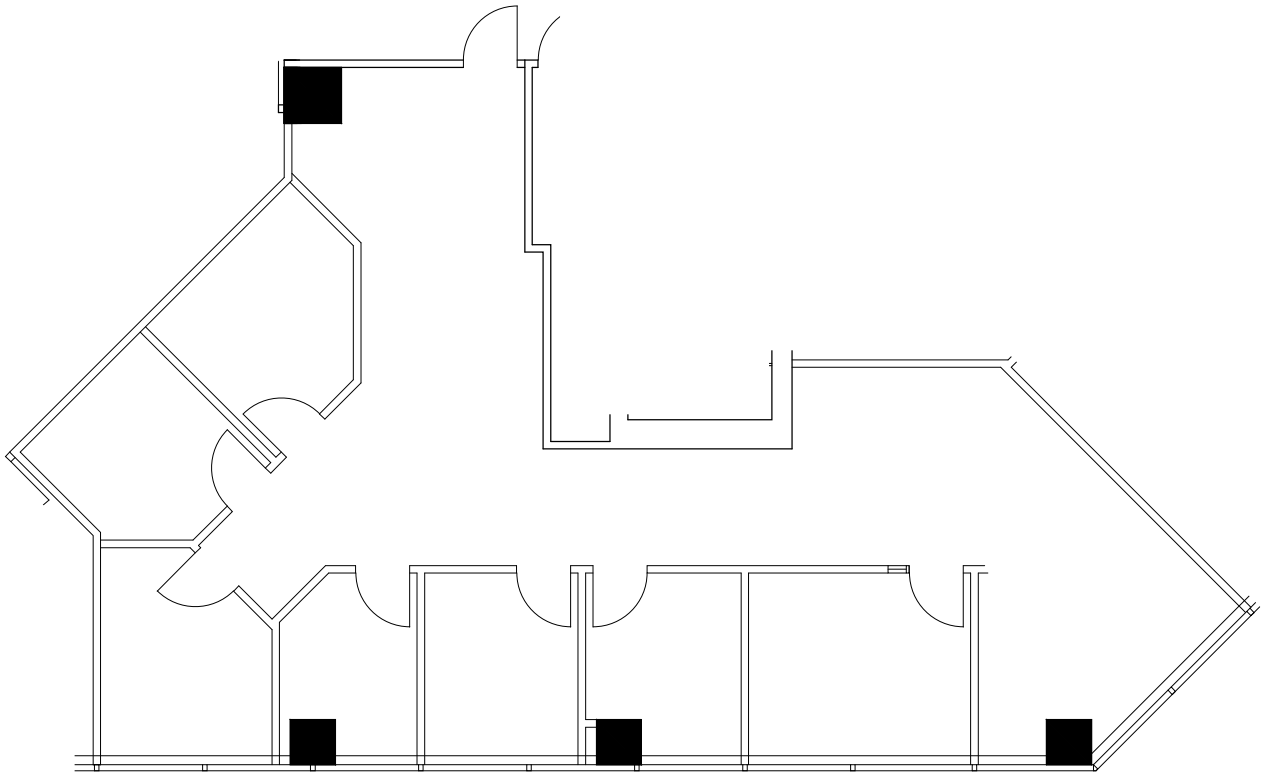
OFFICE

1,796 RSF



KEY PLAN

NOT TO SCALE



SUITE 1135

14,014/11,000 / TTL

FILE COPY - HAS NOT BEEN VERIFIED

7-29-14

SCALE: 1/16" = 1'-0"



LEASED & MANAGED BY:



NORTHLAND PLAZA
3800 AMERICAN BLVD WEST
BLOOMINGTON, MN 55431

NELSON

Nelson Upper Midwest Operating Company, LLC
a licensed affiliate

1201 Marquette Avenue South - Suite 200
Minneapolis, MN 55403
Phone: (612) 822-1211
Fax: (612) 822-1006